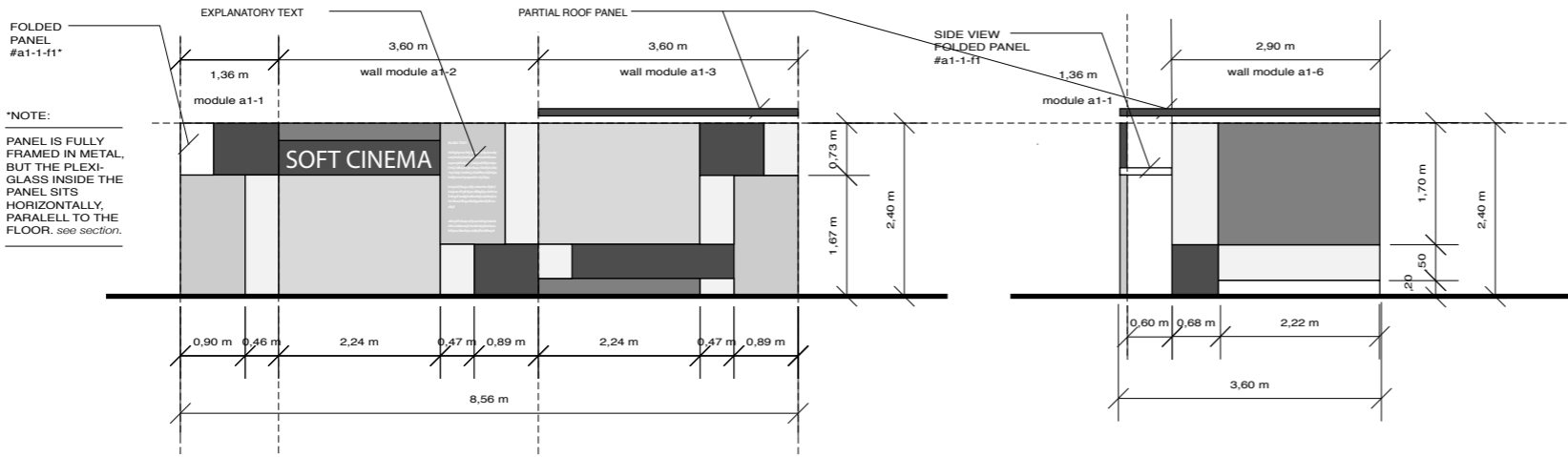


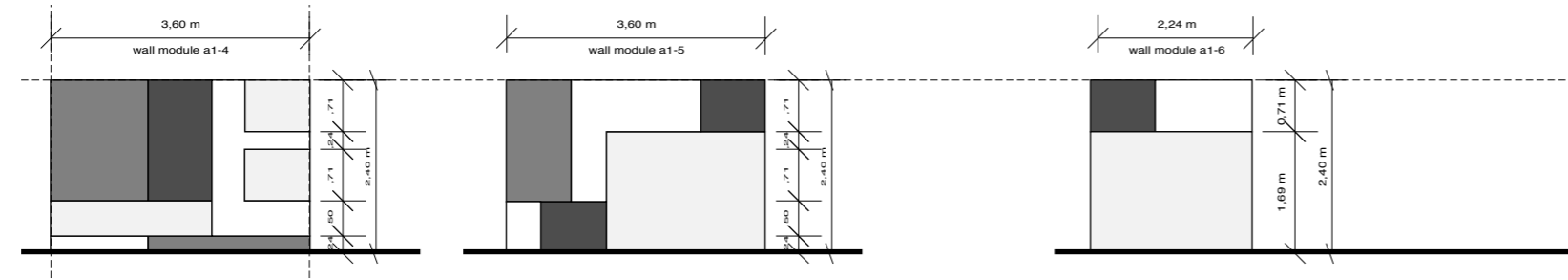
# SOFT CINEMA

for  
**LEV MANOVICH**  
at the ZKM



2.1 FACADE A1  
UNIT A

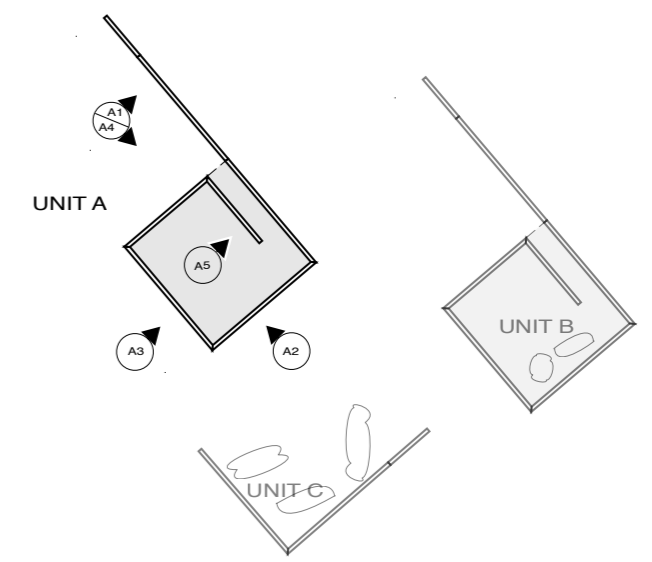
2.2 FACADE A4  
UNIT A



2.3 FACADE A2  
UNIT A

2.4 FACADE A3  
UNIT A

2.5 FACADE A5  
UNIT A



2.0 FACADE KEY PLAN  
M: 1:200 0 5.00 m





**DRAWING**  
2- ELEVATION (A)

**SCALE**  
M 1:100

**DATE**  
13 SEPTEMBER 02

**Soft Cinema, Facade Material Key**

The Boxes will be built with 4 materials of varying translucency according to the following key:

-  transparent plexiglass
-  translucent (sand-blasted) plexiglass
-  translucent double-plexi
-  grey-painted (opaque) medium density fiber board (MDF)

**GENERAL NOTE ON THE LAYOUT OF UNITS B AND C**

The system as expressed in Unit A should be used as an example and guide to design and construct the facades for Unit B and for Unit C as well. Locate patterns for the facades using the Layout Generation Algorithm.

Unit C will be composed of three wall modules (see plan drawing 1) and will "pull apart" to a much larger extent, as per the example of the folded panel in Unit A.

The folded panels in Unit C will vary according to need and should include spaces for text(s) brochures, as well as a bar and other spaces for leaning, sitting, and otherwise physically interacting with the structure.

The holo screen should be fixed to or hanging above Unit C in a pattern matching a "generated" layout.